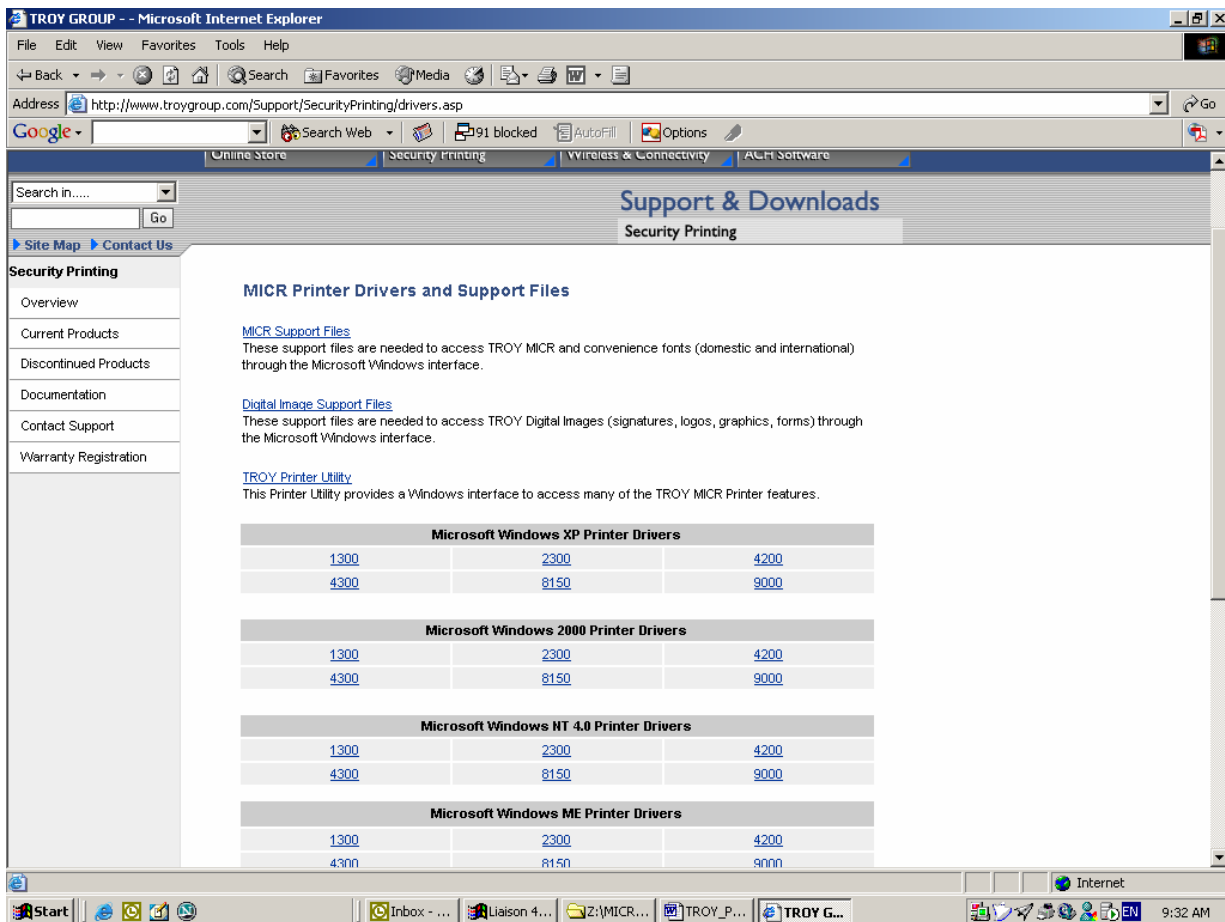


TROY/HP Laserjet PCL5e Driver Installation Procedures

You must first install an appropriate TROY/HP Laserjet PCL 5E driver for your printer. For Troy printers, you must install the appropriate Troy drivers for your Troy Printer. (For instructional purposes we will be referring to the TROY4200/4300 series MICR printer).

- A. Download the HP Laserjet PCL5e driver for your printer from <http://www.troypgroup.com/>.
- B. (Example. HP Laserjet 4300 PCL5e driver for an HP Laserjet or Troy 4300 printer)
- C. For current printers go to: <http://www.troypgroup.com/Support/SecurityPrinting/drivers.asp>
- D. For discontinued printers go to:
<http://www.troypgroup.com/Support/SecurityPrinting/discontinued.asp>



The screenshot shows a Microsoft Internet Explorer browser window displaying the TROY GROUP website. The page is titled "Support & Downloads" and "Security Printing". It features a search bar and a navigation menu. The main content area is titled "MICR Printer Drivers and Support Files" and lists several support files with descriptions:

- [MICR Support Files](#): These support files are needed to access TROY MICR and convenience fonts (domestic and international) through the Microsoft Windows interface.
- [Digital Image Support Files](#): These support files are needed to access TROY Digital Images (signatures, logos, graphics, forms) through the Microsoft Windows interface.
- [TROY Printer Utility](#): This Printer Utility provides a Windows interface to access many of the TROY MICR Printer features.

Below the text, there are four tables listing printer drivers for different operating systems:

Microsoft Windows XP Printer Drivers		
1300	2300	4200
4300	8150	9000

Microsoft Windows 2000 Printer Drivers		
1300	2300	4200
4300	8150	9000

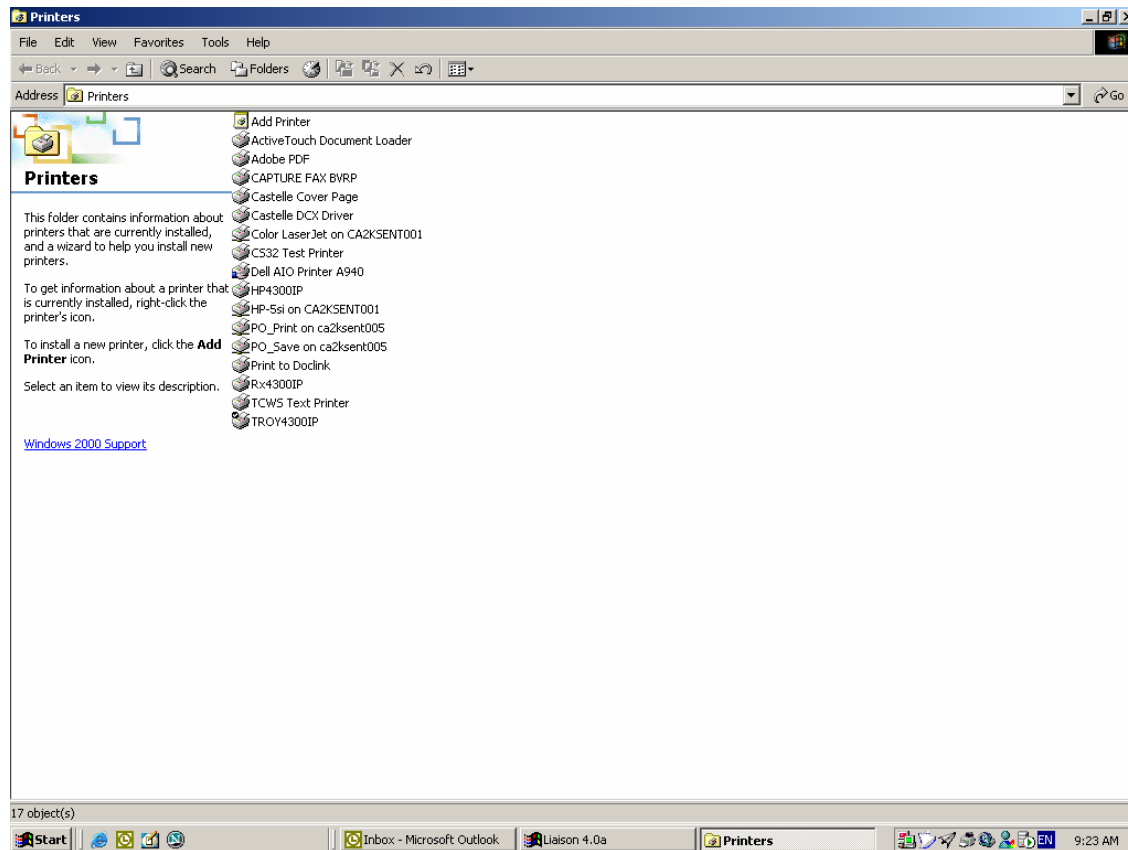
Microsoft Windows NT 4.0 Printer Drivers		
1300	2300	4200
4300	8150	9000

Microsoft Windows ME Printer Drivers		
1300	2300	4200
4300	8150	9000

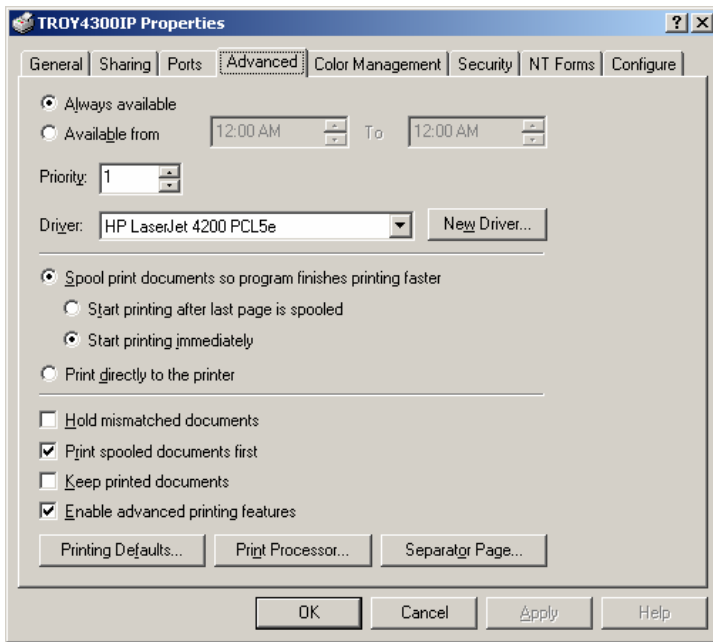
- a. download the TROY MICR driver for your Operating System (ex. Windows95, 2000, etc.) and save the Winxx4300.exe to a temp directory
- b. double click on the Winxx4300.exe and extract files to the default C:\TROY\Winxx\4300 folder.
- c. Copy the TroySec.hpd file, which you were provided, into the same folder. (We'll revisit the TroySec.hpd (TROY Security Font Collection) file on page 7.)

These are general installation procedures for installing the TROY PCL5e driver for a printer. If you are unable to make changes to your printer because of access or network limitations, please contact your network administrator or IT professional for assistance. Add your printer, for instructional purposes we'll call it TROY4300IP.

1. Go to Start → Settings → Printers.



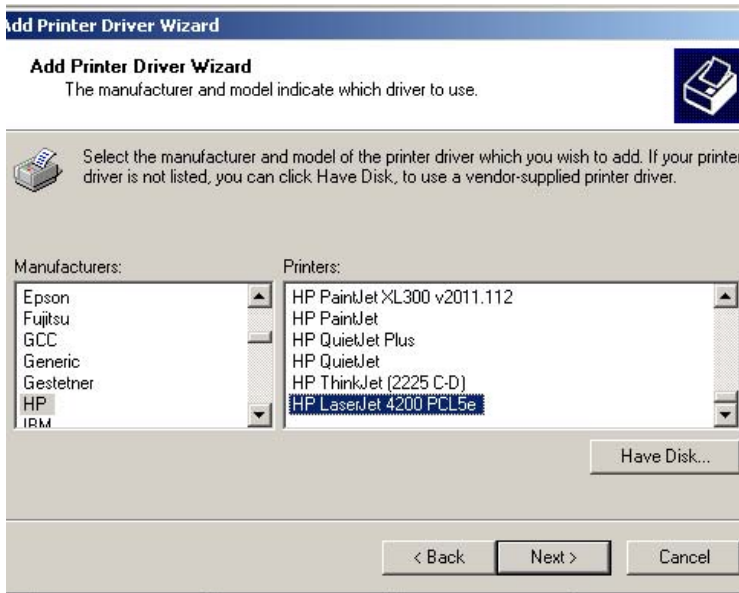
2. Right-click over your printer and select “Properties”. Select the “Advanced” tab.



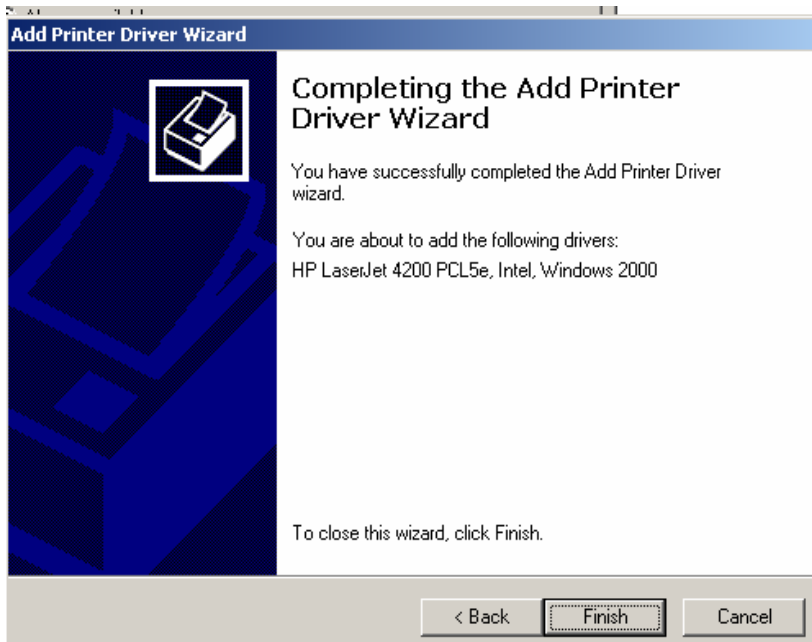
3. Click on “New Driver”.



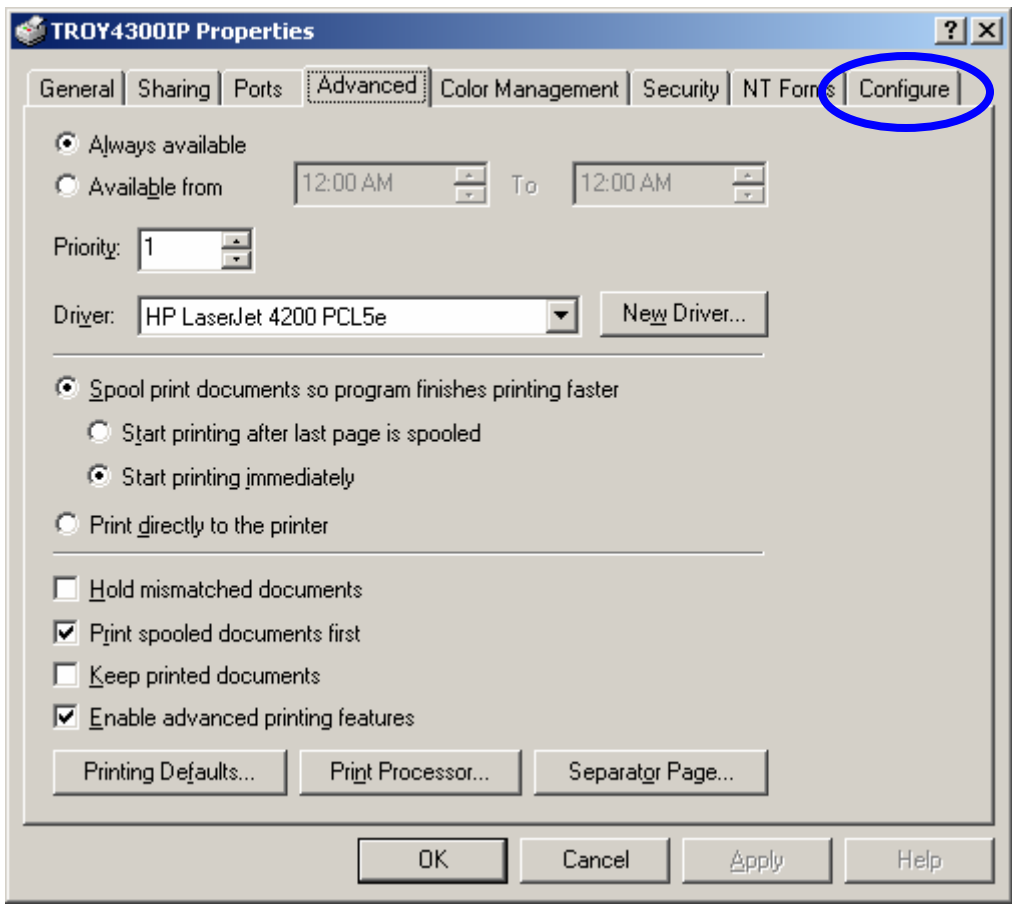
4. Click Next.



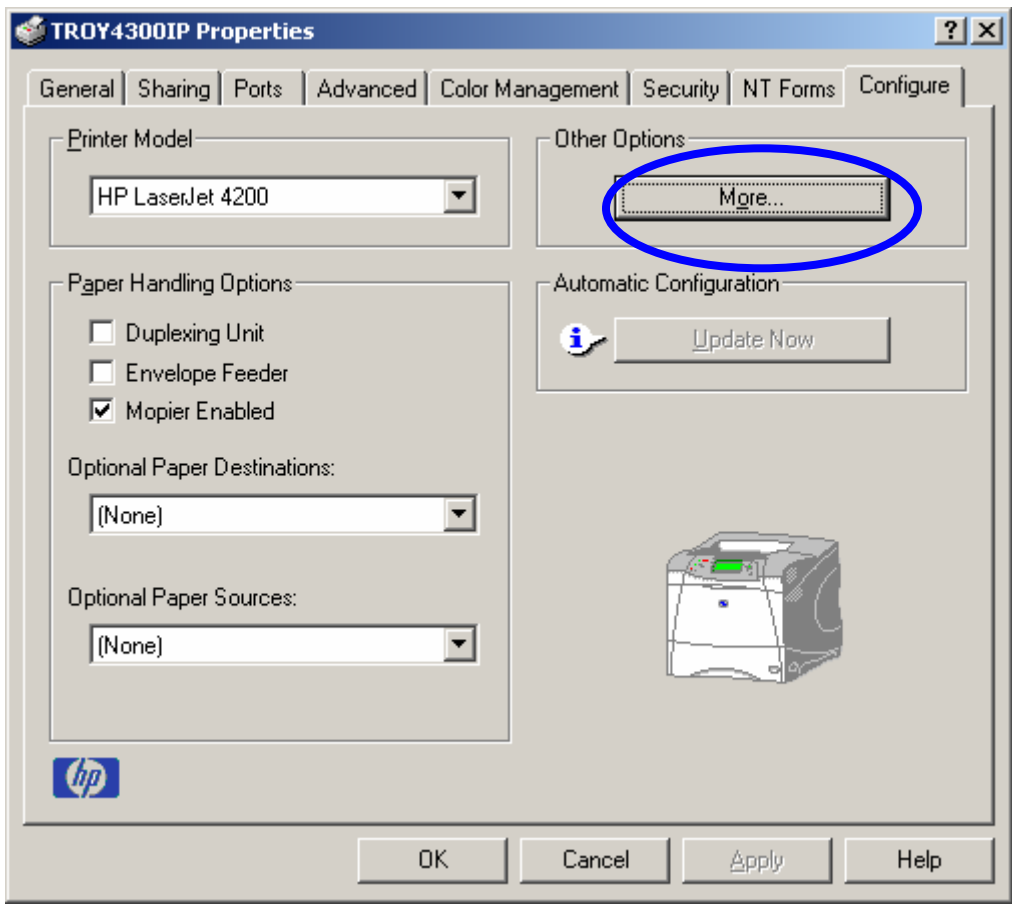
5. Select “HP” for manufacturer and highlight HP Laserjet XXXXPCL5e. Sometimes there may be variations of the HP Laserjet XXXX PCL5e driver. Select either “HP Laserjet XXXX PCL5e” or “HP Laserjet XXXX PCL5e (Microsoft)” when available. NOTE: XXXX is your printer model number (e.g.) 4200,4300,9000 etc.



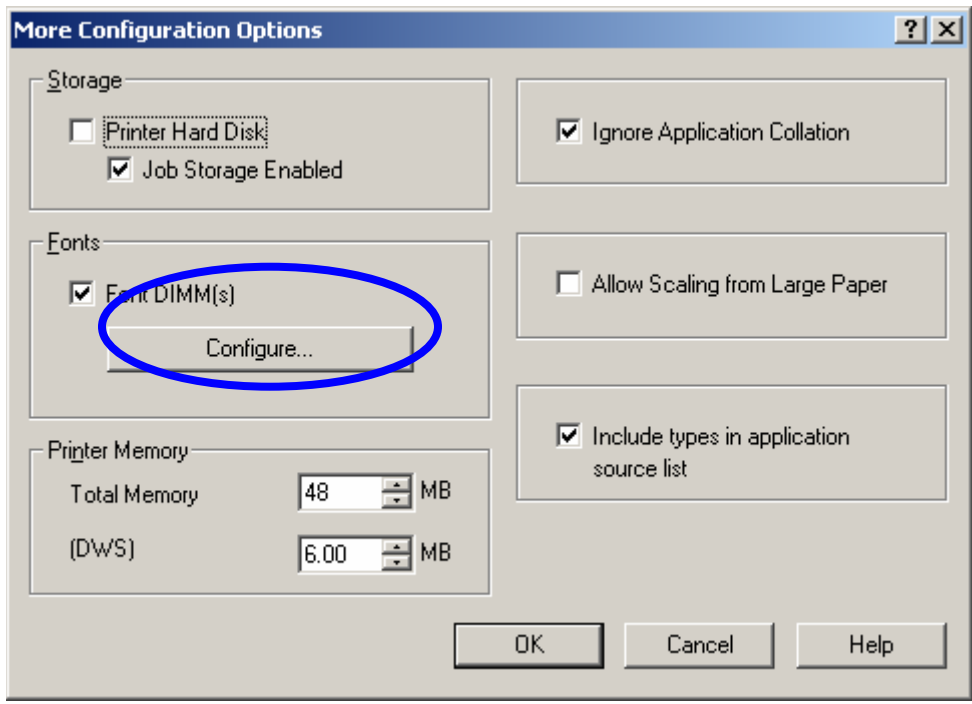
6. Click on “Finish”



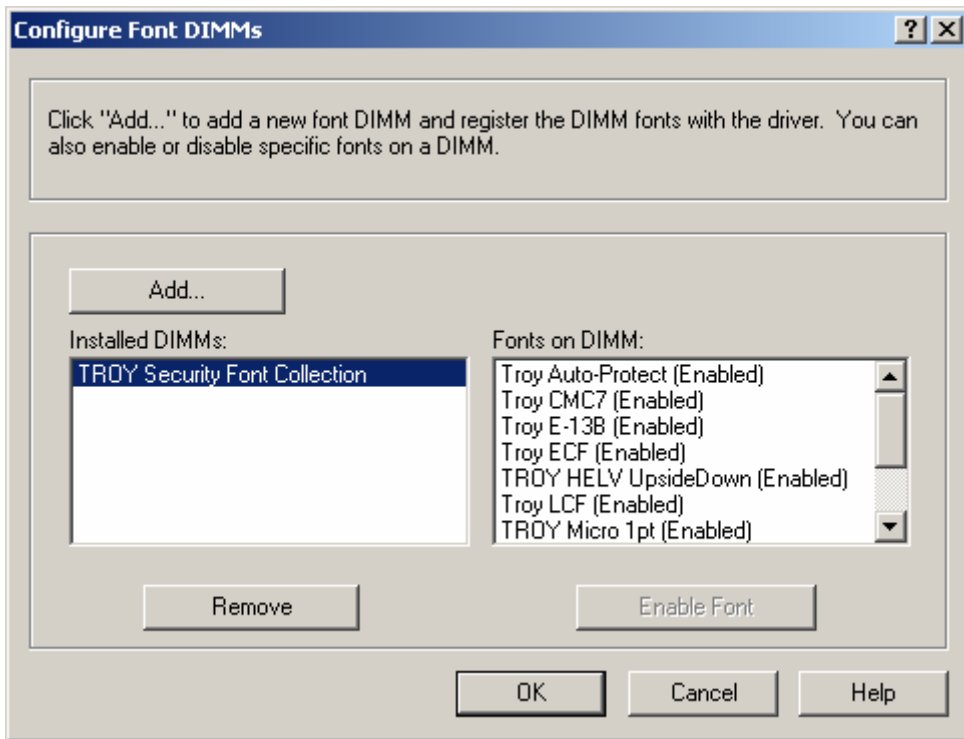
7. Go to the Configure Tab.



8. Click on More Options

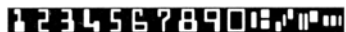


9. Check the Font DIMM (s) box and click on Configure.

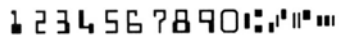


10. Click on add and then browse for the TroySec.hpd file that you were provided with. Select the file and click OK. **(You have installed the PCL5e driver)**

11. Once installed, to test the MICR font, open MS Word or Wordpad. Type the numbers “1234567890ABCD”, highlight the string, change font to Troy E-13B, and print. If everything is configured properly, you should see a sample of the MICR font on the page. It should be a **white background and black foreground**. If it looks like this:



instead of



then something is wrong.

The colors are in inverse. Double check that the “Add Font Dimms” box **remains checked** and the micr.hpd is added in the configure tab of the printer properties. If the printer drivers and fonts are configured properly but still in inverse, you may need to delete and “Add a New Printer” again.

- a) Once the MS Word test runs successfully on the print server, the next step is to setup the individual check printing workstations with the same driver and font configurations. Run the MS Word tests to confirm that they are correctly configured.

NOTE: If the printers have jetdirect cards, it may be easier to setup local TCP/IP ports on each workstation and then print to the ipaddress. Thus, bypassing the print server.