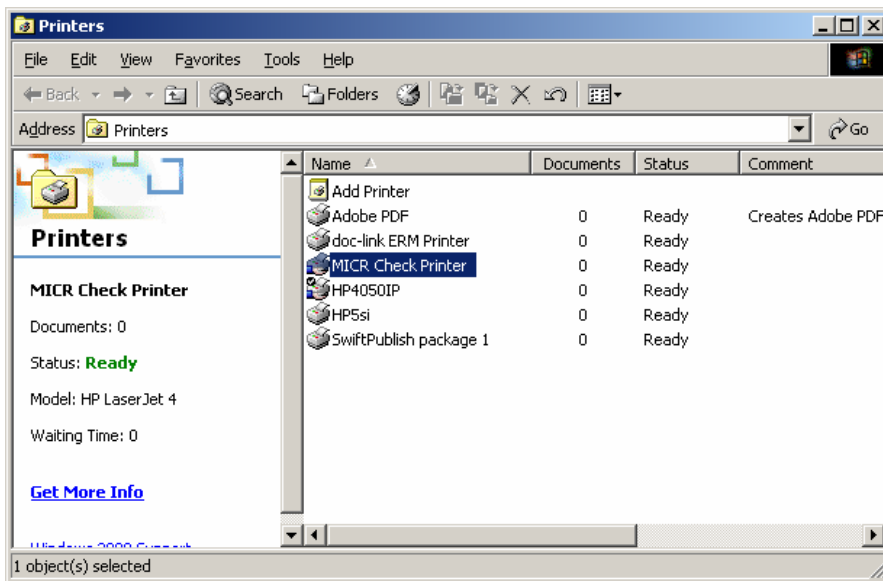


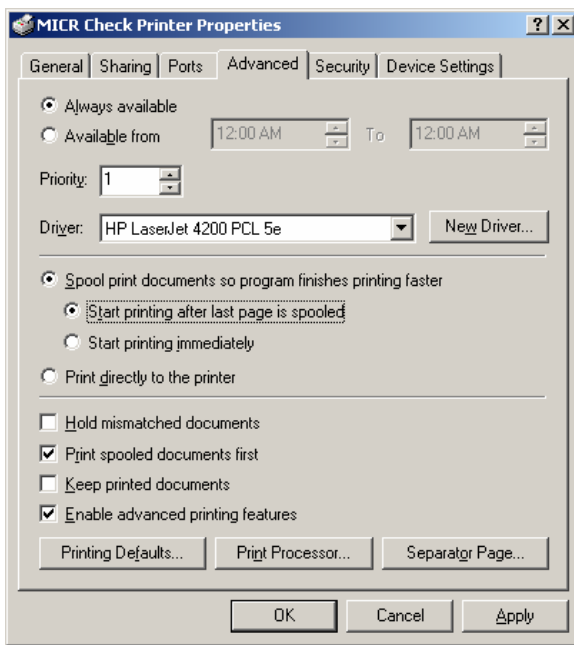
HP Laserjet 4 Plus Driver Installation Procedures

These are general installation procedures for installing the HP Laserjet 4 Plus driver for a printer. If you are unable to make changes to your printer because of access or network limitations, please contact your network administrator or IT professional for assistance.

1. Go to Start → Settings → Printers.



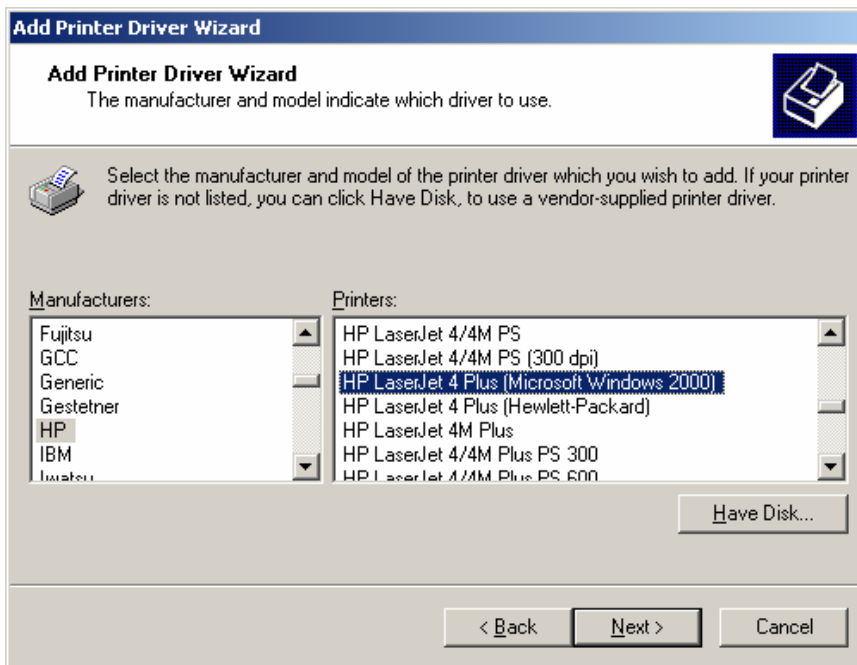
2. Right-click over your printer and select “Properties”. Select the “Advanced” tab.



3. Click on “New Driver”.



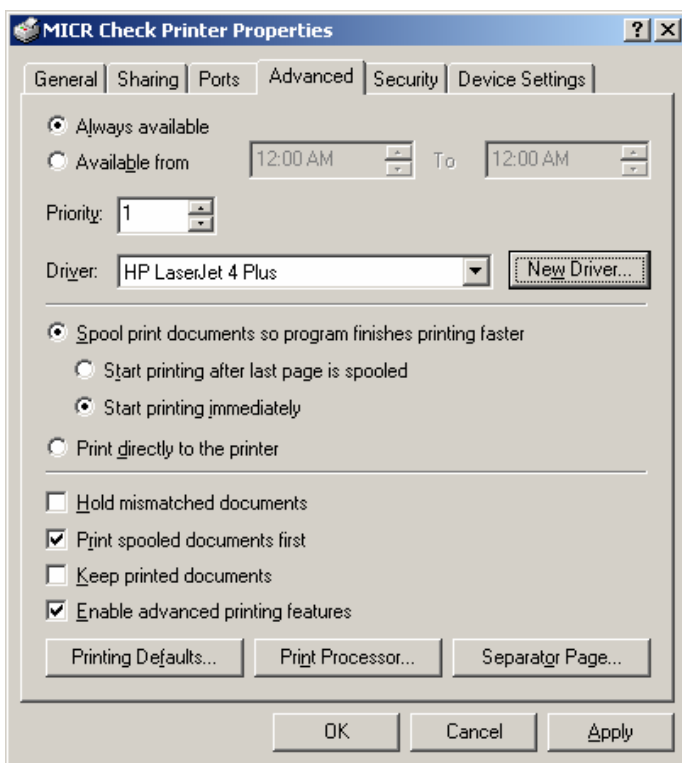
4. Click Next.



5. Select “HP” for manufacturer and highlight HP Laserjet 4 Plus. Sometimes there may be variations of the HP Laserjet 4 Plus driver. Select either “HP Laserjet 4 Plus” or “HP Laserjet 4 Plus (Microsoft)” when available.



6. Click on “Finish”



7. You have now installed the HP Laserjet 4 Plus printer driver.

8. Once the HP Laserjet 4 Plus driver is installed, you are ready to test.
 - a) First set the check printer with the Laserjet 4 Plus driver installed as your default printer.
 - b) Open MS Word or Wordpad.
 - c) Type ~**1M~(8M~(s0p8h10v0s0b100T1234567890ABCD and highlight the string. For Windows 2000 or XP, change the font to Courier or Univers. For Times New Roman or NT, change to Times New Roman.
 - d) Print.

If everything is configured properly, you should see a sample of the MICR font on the page. If it looks like this:

~**1M~(8M~(s0p8h10v0s0b100T1234567890ABCD

instead of

1 2 3 4 5 6 7 8 9 0 ! " # \$ % & ' () * + , - . / : ; < = > ? @ [\] ^ _ ` { | } ~

then something is wrong.

Make sure that the printer is using the HP Laserjet 4 Plus driver. Check to make sure you have the proper font selected for it's respective Operating System. Sometimes you may need to delete and "Add a New Printer" again.

If this is a network printer and there is a print server involved, follow the steps outlined above on the print server first. Once it is configured properly and the MS Word test runs successfully on the print server, the next step is to setup the individual check printing workstations with the same driver and font configurations. Run the MS Word tests to confirm that they are correctly configured as well.

NOTE: If the printers have Jetdirect cards, it may be easier to setup local TCP/IP ports on each workstation and then print to the ipaddress. Thus, bypassing the print server.

9. Last step is to test a check.