

# DIMM Installation Guide

## Hewlett-Packard 9000 Series Printers:

**IMPORTANT:** Ensure the printer power is switched OFF, and then disconnect the printer power cord from the AC wall outlet.

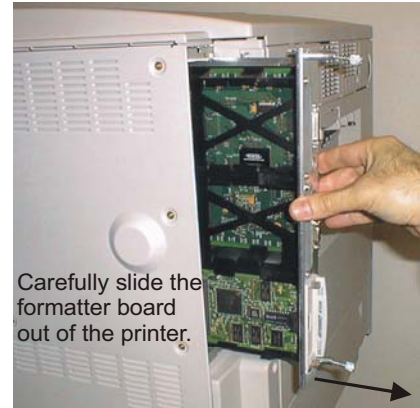
1. Loosen the two thumbscrews (turn counter-clockwise) at the rear of the printer (Figure 1 and Figure 2), and then carefully slide the formatter board out of the printer (Figure 3).



Figure 1



Figure 2



Carefully slide the formatter board out of the printer.

Figure 3

2. Set the formatter board on a clean flat surface. Ensure the retaining clips for one of the available DIMM slots are pushed out to the side to allow installation of the DIMM. *Do NOT remove or change the slot location of any currently installed DIMM. Use one of the currently empty DIMM slots only.*
3. Install the DIMM into one of the available DIMM slots in the correct orientation, matching the cutouts in the DIMM with the tabs at the bottom of the DIMM slot (Figure 4 and Figure 5).

**CAUTION:** The DIMM is a static-sensitive device and can be permanently damaged if handled improperly. Handle the DIMM by the edges only. Avoid touching the components on the DIMM or the metal contacts along the edge of the DIMM. Before removing the DIMM from the anti-static-bag, ground yourself by touching the metal portion of the printer chassis to dissipate any static charge.

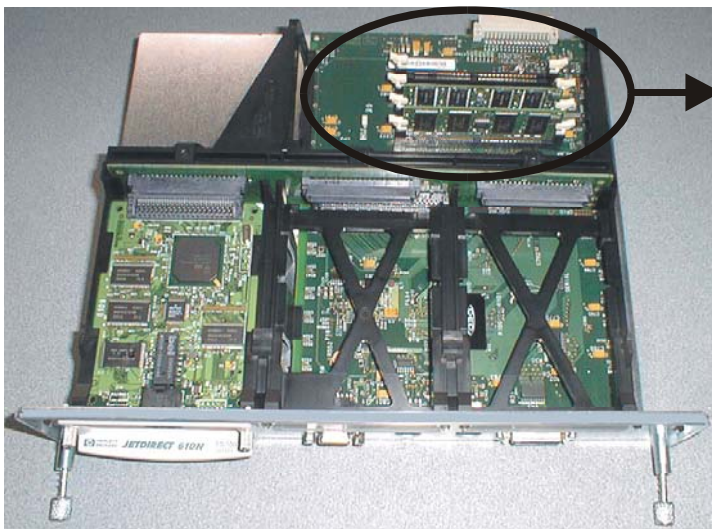


Figure 4

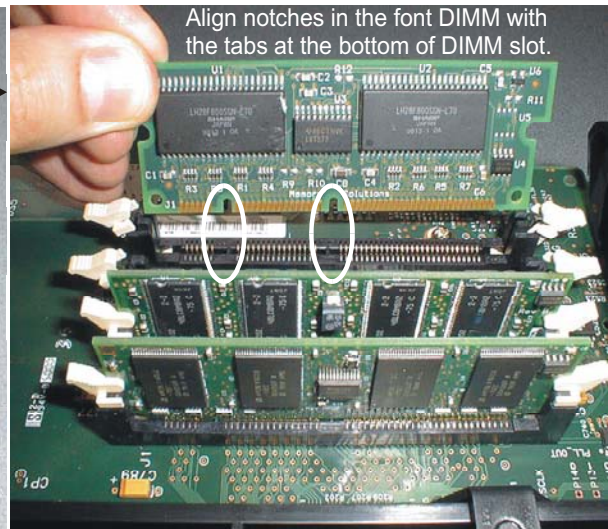


Figure 5

# DIMM Installation Guide

4. Ensure the DIMM is positioned correctly, and then fully insert the DIMM into the DIMM slot until the DIMM snaps firmly into place (Figure 6). *The retaining clips will close automatically.* Verify the DIMM retaining clips are fully closed.

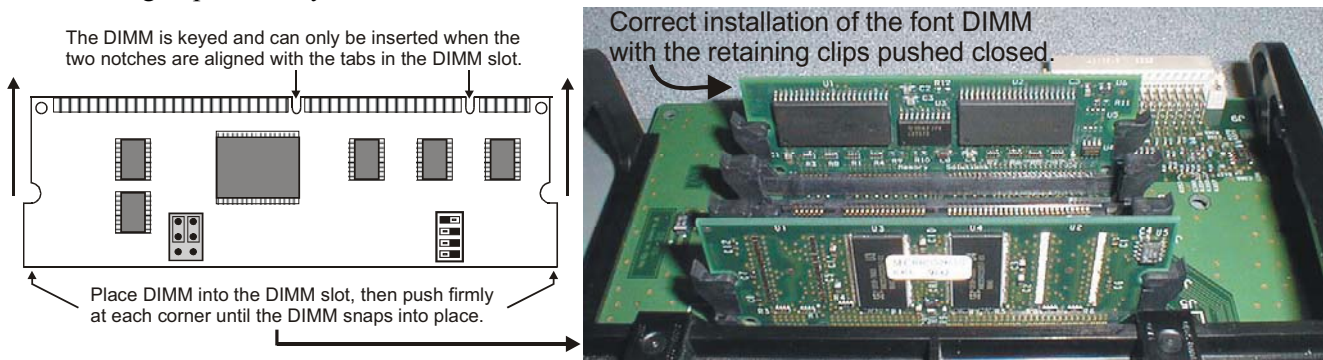


Figure 6

5. Align the top and bottom edges of the formatter board with top and bottom track guides inside the printer (Figure 7 and Figure 8), and carefully slide the formatter board into the printer. Hand-tighten the two thumbscrews (turn clockwise) on the formatter board.

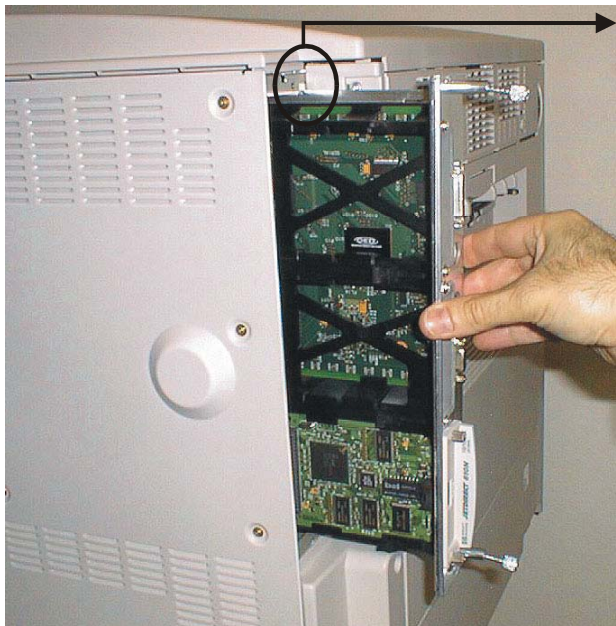


Figure 7

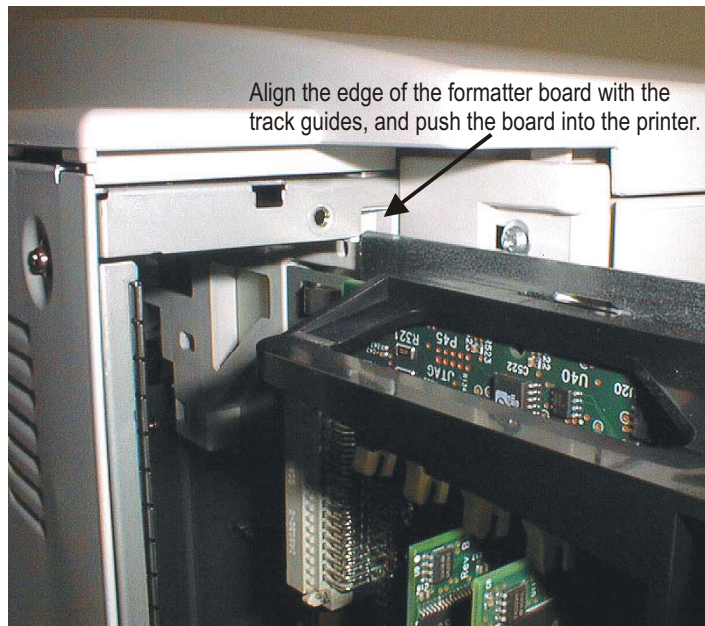


Figure 8

6. Reconnect the printer data cable and power cable. The front DIMM installation is complete.
7. Refer to the HP Quick-Start Guide (provided with your HP DIMM Solution) for instructions on installing the required HP software and support files.

**NOTE:** If assistance is required for removing or installing the DIMM, please call Altec Technical Support at (800) 997-9921 x 1248.