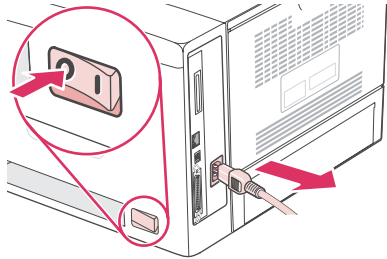


# Installing CompactFlash cards

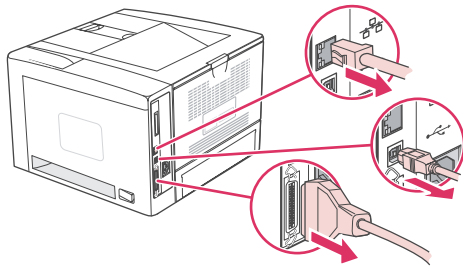
Up to two CompactFlash cards can be installed to add fonts to the printer.

## To install a CompactFlash card

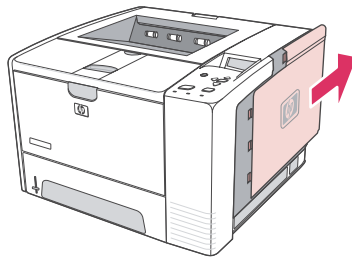
1. After the configuration page has printed, turn the printer off and disconnect the power cord.



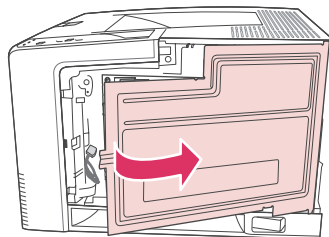
2. Disconnect all interface cables.



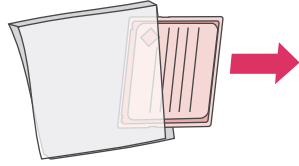
3. Remove the right side panel by sliding it towards the rear of the printer until the side slides free from the printer.



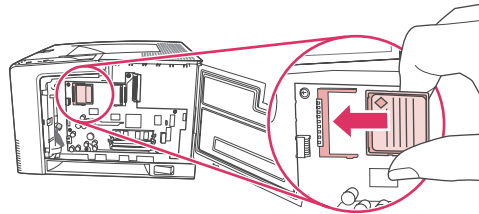
4. Open the access door by pulling on the metal tab.



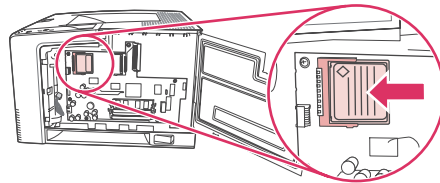
5. Remove the new CompactFlash card from its package.



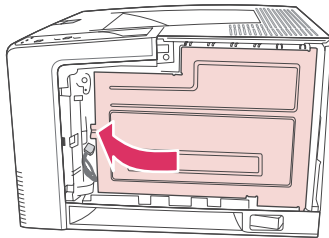
6. Hold the CompactFlash card by its edges and line up the grooves in the side of the card with the tabs in the CompactFlash card slot.



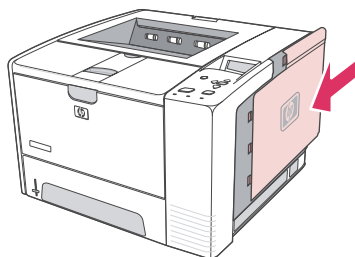
7. Slide the CompactFlash card into place.



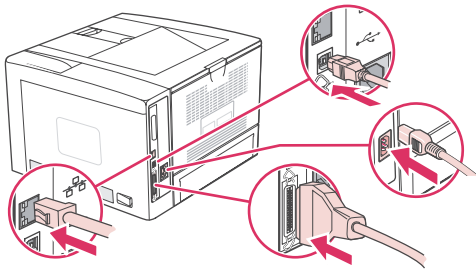
8. Close the access door, and press firmly until it snaps into place.



9. To replace the right side panel, line up the alignment arrows and slide the panel toward the front of the printer until it latches into place.



10. Reconnect the interface cable(s) and the power cord.



Use Device Storage Manager in HP Web Jetadmin to manage fonts. For more information, see the Help in HP Web Jetadmin.

## Checking DIMM or CompactFlash installation

After installing the DIMM or CompactFlash card, make sure that the installation was successful.

### To verify that DIMMs or CompactFlash cards are installed correctly

1. Turn the printer on. Check that the Ready light is illuminated after the printer has gone through the startup sequence. If an error message appears, a DIMM or CompactFlash card might have been incorrectly installed. See [Interpreting control-panel messages](#).
2. Print a configuration page (see [Configuration page](#)).
3. Check the memory section on the configuration page and compare it to the configuration page that was printed before the memory installation. If the amount of memory has not increased, the DIMM or CompactFlash card might not be installed correctly, or the DIMM or CompactFlash card might be defective. Repeat the installation procedure. If necessary, install a different DIMM or CompactFlash card.

---

**NOTE**

---

If you installed a printer language (personality), check the "Installed Personalities and Options" section on the configuration page. This area should list the new printer language.