

FORMAX®

Div. of BESCORP, Inc.

AutoSeal® P2052

FOLDER/SEALER



Standard Features:

- **Top Feed System:** A “drop-in” three-roller system produces dependable feeding of forms.
- **Variable Speed Control:**
Up to 11,000 pieces per hour.
- **Pre-programmed for 3 popular folds:** Single half fold, letter C fold, and accordion Z fold.
- **17” Form Capability:** Flexibility to process forms up to 17” in length.
- **Programmable Job Settings:**
Set and store up to 9 custom jobs.
- **Fault Detector:** Detects double feeding and any faults.
- **Six Digit Resettable Counter:**
For maximum audit control.
- **Batch Counting:** Allows for preset counts of documents to be processed.
- **Conveyor with Photo Eye:**
Allows for neat and sequential stacking.
- **Cabinet:** Fully enclosed for storage.
- **Noise Reduction:** Top and side covers are insulated to reduce operating noise.

Options:

- **FD 400 Jogger:** Reduces static electricity and aligns forms for proper feeding.

The AutoSeal® P2052 is a fully automatic folder/sealer providing the ultimate solution for processing pressure sensitive self-mailers. Designed with ease of operation and efficiency in-mind, the P2052 automatically detects and adjusts for 11” and 14” paper sizes and is pre-programmed for three popular folds C, Z and half fold. The P2052 also has the ability to store up to 9 custom fold settings with the simple touch of a button. Up to 350 forms can be loaded in the hopper and processed at speeds up to 11,000 per hour. These features combined make the P2052 an ideal solution for streamlining your post processing. The P2052 comes standard with a fully enclosed cabinet for storage and a conveyor with photo eye for neat and sequential stacking of processed forms.

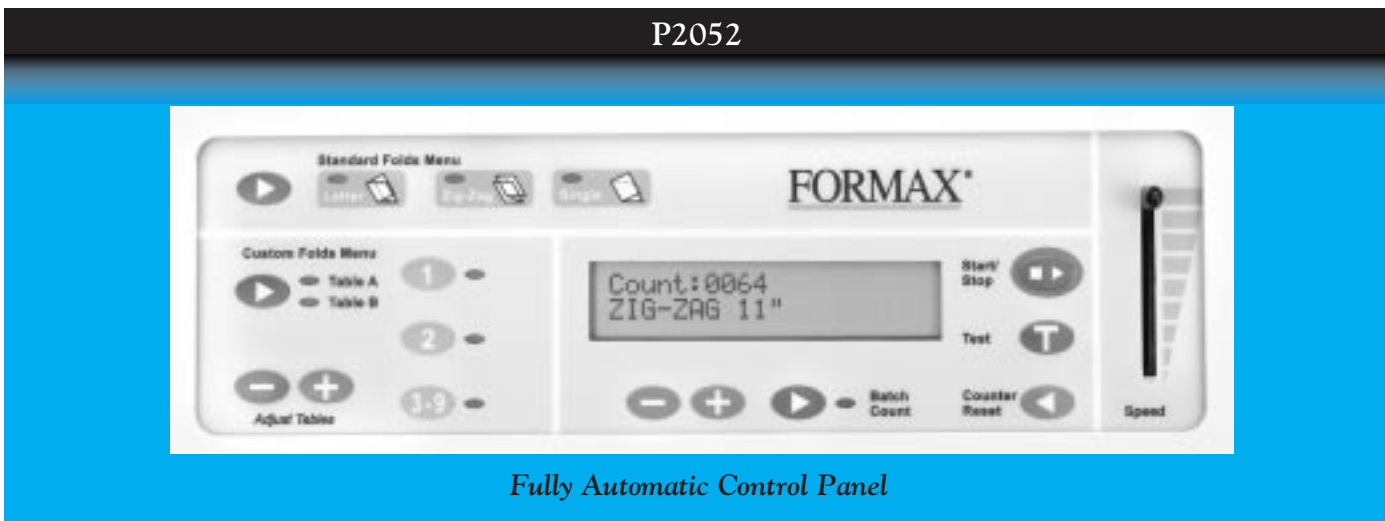
Altec
Laguna Hills, CA
800-997-9921

Flexible

The P2052 handles a variety of documents up to 8 1/2" x 17" including checks, invoices, school reports, tax forms and appointment notices. Pressure seal mailers can be used for virtually any application that can be printed on one form.

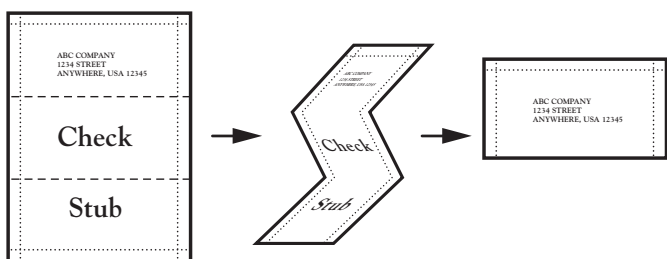
Powerful

The P2052 processes forms at a rate of up to 11,000 sheets per hour and can hold up to 350 - 24# forms in the feed hopper. Combined with a duty cycle of up to 125,000 forms per month the P2052 offers the ultimate solution to streamlining your paper processing.



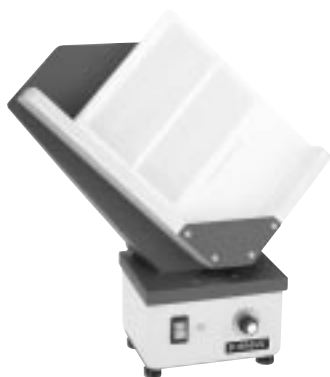
Pressure Seal Solution

The AutoSeal P2052 combined with a simplex printer and pressure seal forms create a secure, cost effective and time saving paper processing solution.



Standard Z-Fold Process

The **FD 400 Jogger** is a recommended option that reduces static electricity from forms and aligns them for proper feeding.



Ease of Operation

The P2052 sets a new standard in pressure seal ease-of-use. Folds for 11" and 14" forms are automatically set with the touch of a button. Up to nine custom folds can be stored into memory eliminating the need for manual set up of non-traditional pressure seal forms.

| | | |
|-----------------------|---------------------------------------|--|
| SPECIFICATIONS | Hopper Capacity: | 350 Sheets 24# |
| | Variable Speed: | Up to 11,000 sheets per hour |
| | Paper Size: | Up to 8 1/2" x 17" |
| | Power: | 120 Volts AC 50/60 HZ |
| | Duty Cycle: | 125,000 per month |
| | Dimensions: | 46" L x 20" W x 44" H (Includes Conveyor & Cabinet) |
| | Weight: | 187 lbs. |
| Certifications: | UL and CUL approved CE applied for | |

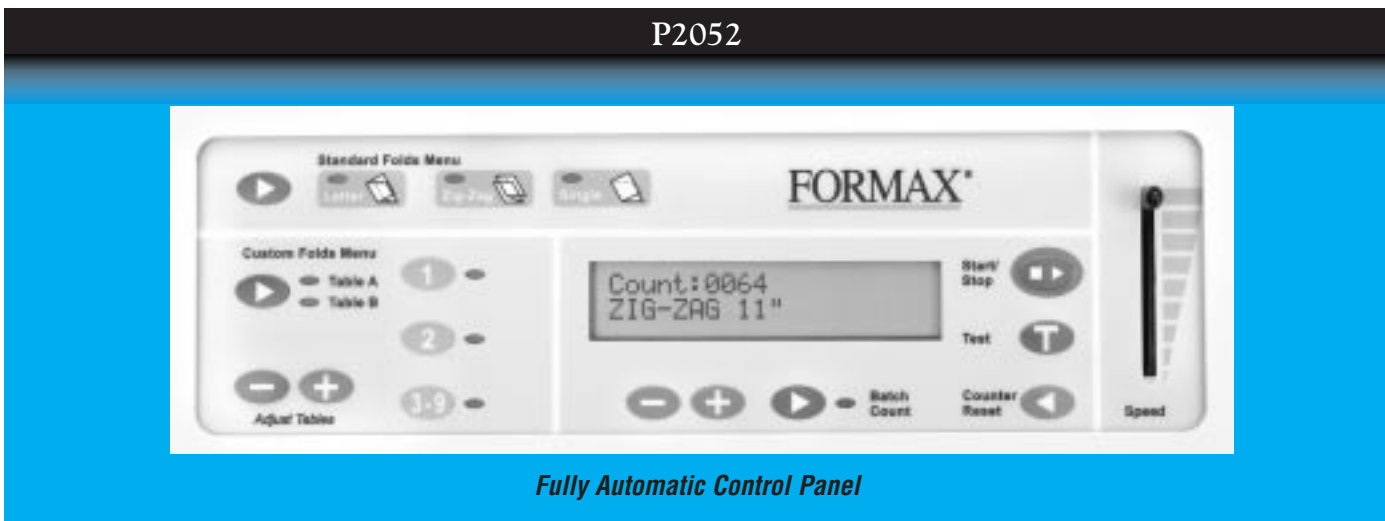
U.S. Patents 5,772,841, 5,865,925 & 5,968,308 Other Patents Pending

Flexible

The P2052 handles a variety of documents up to 8 1/2" x 17" including checks, invoices, school reports, tax forms and appointment notices. Pressure seal mailers can be used for virtually any application that can be printed on one form.

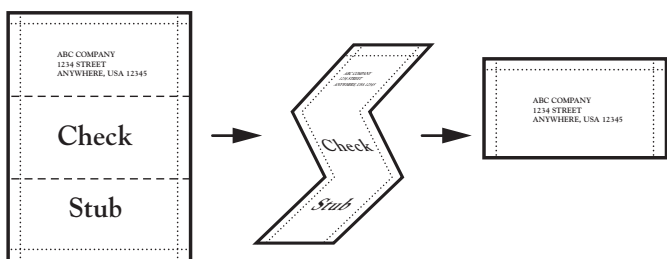
Powerful

The P2052 processes forms at a rate of up to 11,000 sheets per hour and can hold up to 350 - 24# forms in the feed hopper. Combined with a duty cycle of up to 125,000 forms per month the P2052 offers the ultimate solution to streamlining your paper processing.



Pressure Seal Solution

The AutoSeal P2052 combined with a simplex printer and pressure seal forms create a secure, cost effective and time saving paper processing solution.

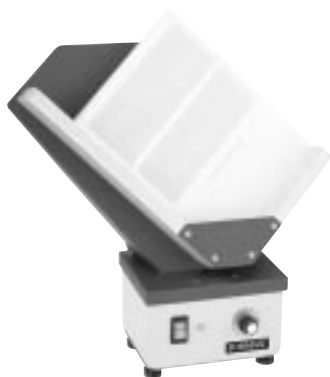


Standard Z-Fold Process

Ease of Operation

The P2052 sets a new standard in pressure seal ease-of-use. Folds for 11" and 14" forms are automatically set with the touch of a button. Up to nine custom folds can be stored into memory eliminating the need for manual set up of non-traditional pressure seal forms.

The **FD 400 Jogger** is a recommended option that reduces static electricity from forms and aligns them for proper feeding.



| | | |
|-----------------------|---------------------------------------|--|
| SPECIFICATIONS | Hopper Capacity: | 350 Sheets 24# |
| | Variable Speed: | Up to 11,000 sheets per hour |
| | Paper Size: | Up to 8 1/2" x 17" |
| | Power: | 120 Volts AC 50/60 HZ |
| | Duty Cycle: | 125,000 per month |
| | Dimensions: | 46" L x 20" W x 44" H (Includes Conveyor & Cabinet) |
| | Weight: | 187 lbs. |
| Certifications: | UL and CUL approved CE applied for | |

U.S. Patents 5,772,841, 5,865,925 & 5,968,308 Other Patents Pending